

VELI

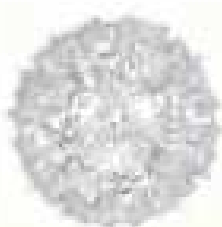
BY ADRIANO RACHELE

Like a tailor-made dress, this piece is assembled entirely by hand. When installed it gently 'clothes' and 'simplifies' the light. The magnetic base and its range of colours and sizes makes it extremely versatile. Produced either in luminous Opalflex® or in the Prisma version made from the magical Lenaflex®.

Come un abito sartoriale, è allestita completamente a mano. Scende ed esalta naturalmente la luce, grazie alle suggestioni cromatiche di Opalflex®. Il supporto magnetico, i tanti colori e le misure disponibili la rendono molto versatile. Nella versione Prisma, gli usi di Lenaflex® filtrano la luce dando affascinanti riflessi.



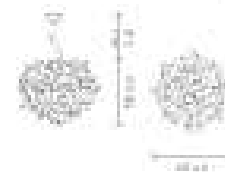




VELI PRISMA design by Adriano Pacifici

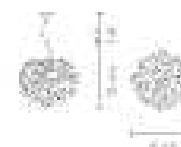
SUSPENSION LAMP

Size: 4 X 200 mm - E27 F25
 Material: Prisma Lucifera®
 With: Magneti-Spina®



SUSPENSION

Size: 2 X 200 mm - E27 F25
 (height 120 mm)
 Material: Prisma Lucifera®
 With: Magneti-Spina®



CEILING WALL LAMP LASSI

Size: 3 X 200 mm - E27 F25
 (height 300 mm)
 Material: Prisma Lucifera®
 With: Magneti-Spina®



CEILING WALL LAMP

Size: 2 X 200 mm - E27 F25
 (height 120 mm)
 Material: Prisma Lucifera®
 With: Magneti-Spina®

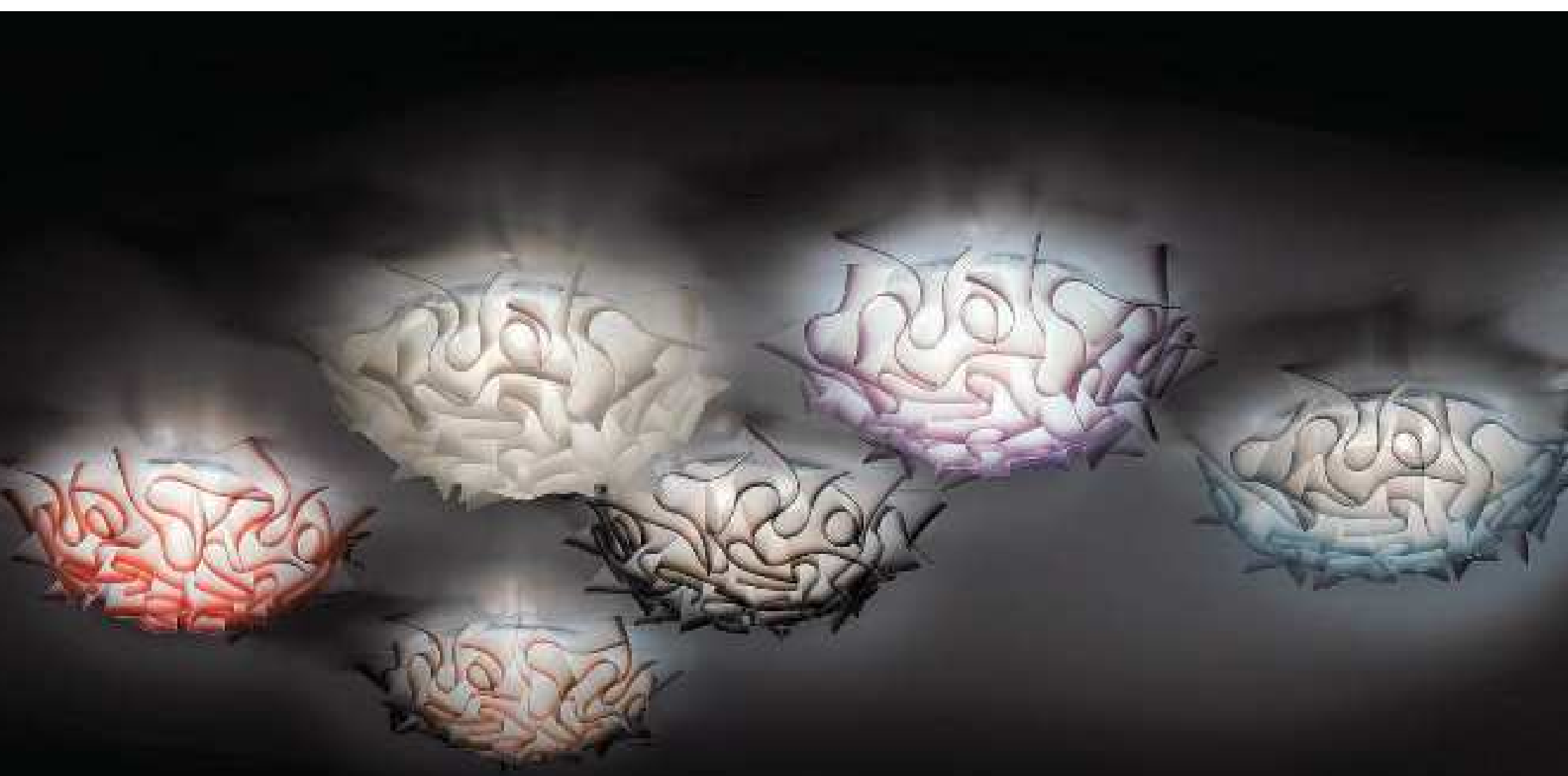


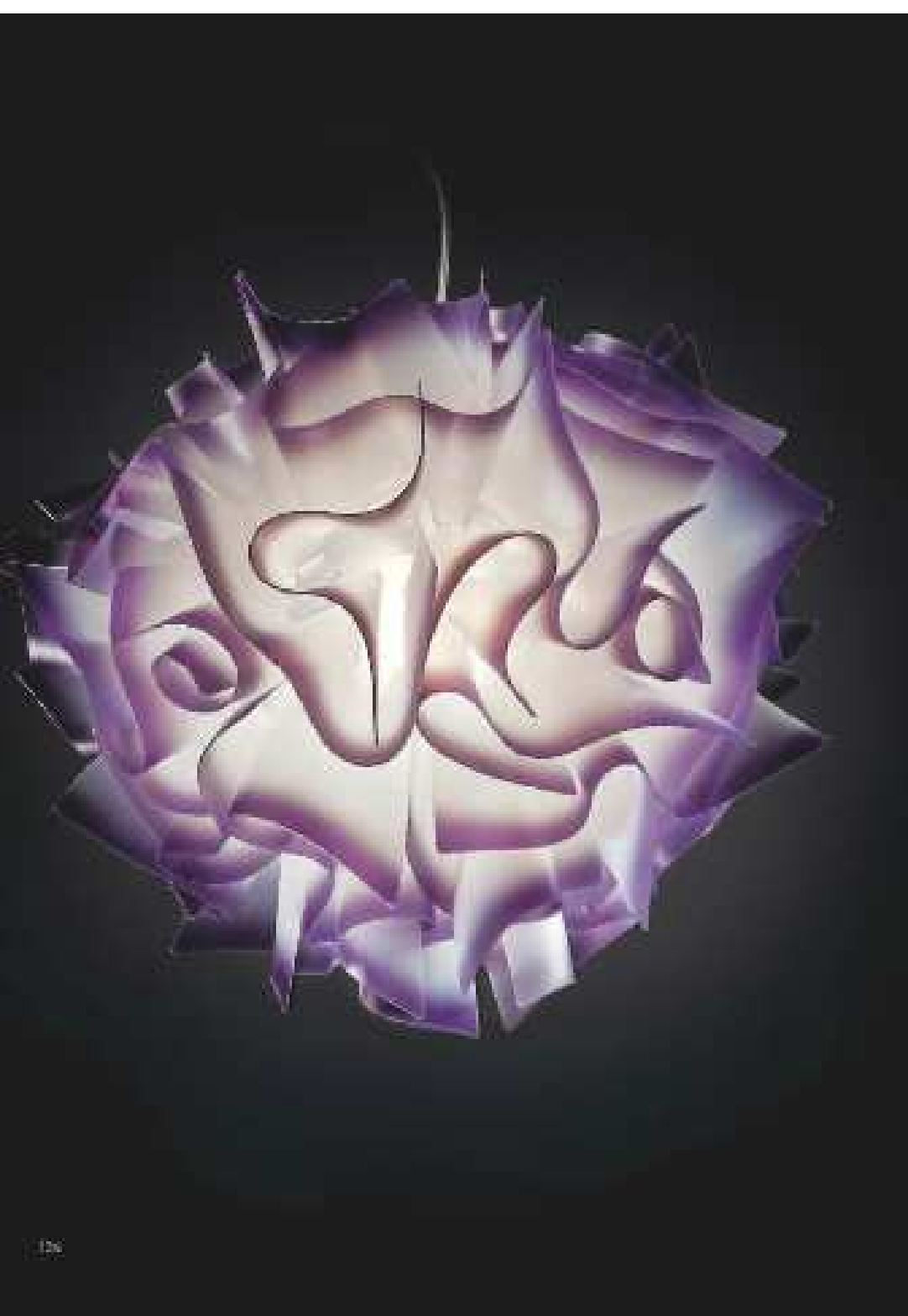
CEILING WALL LAMP MINI

Size: 1 X 110 mm - E14 F25
 (height 110 mm)
 Material: Prisma Lucifera®
 With: Magneti-Spina®



Let Pdf: [paper Tx 14](#)





VELI design by Adriano Panfili



SUSPENSION LAMP

Scale: 4 X 200 mm - E27 F35
 Material: Opal Glass
 With: Magnetic System P



SUSPENSION

Scale: 2 X 200 mm - E27 F35
 Lamp length: 100 mm
 Material: Opal Glass
 With: Magnetic System P



CEILING WALL LAMP LARGE

Scale: 2 X 200 mm - E27 F35
 Lamp length: 100 mm
 Material: Opal Glass
 With: Magnetic System P



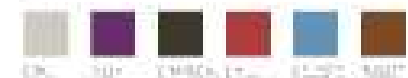
CEILING WALL LAMP MEDIUM

Scale: 1 X 170 mm - E14 F35
 Lamp length: 110 mm
 Material: Opal Glass
 With: Magnetic System P



CEILING WALL LAMP

Scale: 2 X 200 mm - E27 F35
 Lamp length: 110 mm
 Material: Opal Glass
 With: Magnetic System P



Kit list: pages 17, 18



VELI 7 design by Andrea Piretti

CEILING HALL LAMP

Size: 1.000 x 600 cm
Material: Enamel on Steel



List Item page 15